



REV	DATE	DRAWN/CHKD	DESCRIPTION
B	08MAR2007	MJS/KPL	PRN: P2007-0350
C	24APR2008	CW/MJS	PRN: P2008-0453
D	22OCT2009	ACH/MJS	PRN: P2009-1222
E	14SEP2015	CMS/LT	PRN: P2015-1864

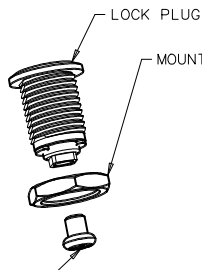
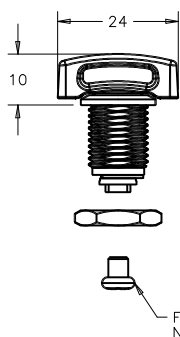
MILLIMETERS
ALL DIMENSIONS WITHOUT TOLERANCES ARE FOR REFERENCE ONLY.


SHEET 1 OF 2

WING PART NUMBER:

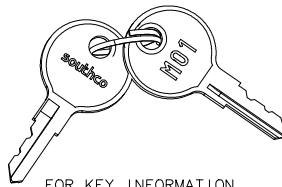
CM-9-1 109-12N

KEY LOCKING PART NUMBER:

CM-9-1 109-21 -



HOUSING FINISH:
B = BLACK POWDER COATED
C = CHROME PLATED



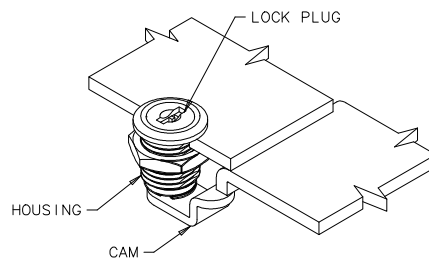
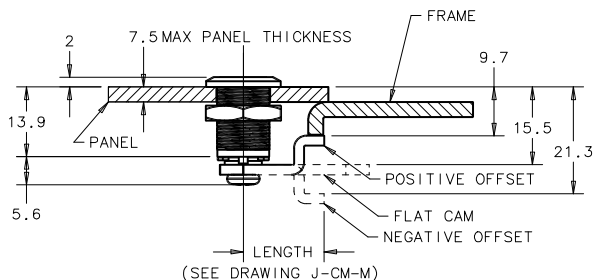
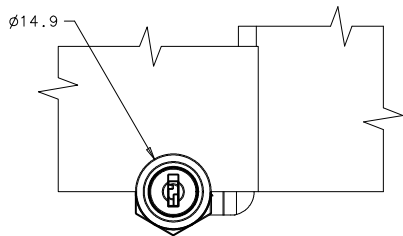
FOR KEY INFORMATION
SEE DRAWING J-PK-CM-0-9

KEY REMOVABLE:
B = LOCKED/UNLOCKED POSITION
L = LOCKED POSITION

KEY CODE:
KA = KEYED ALIKE, KEY CODE M01
KD = KEYED DIFFERENTLY, CODES M01-M10

M02 = KEY CODE M02
M03 = KEY CODE M03
M04 = KEY CODE M04
M05 = KEY CODE M05
M06 = KEY CODE M06
M07 = KEY CODE M07
M08 = KEY CODE M08
M09 = KEY CODE M09
M10 = KEY CODE M10
OMIT FOR TOOL WING OR TOOL DRIVER

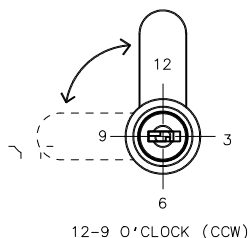
NOTES:
A. FOR INSTALLATION AND PANEL PREPARATION SEE SHEET 2.
B. SEE J-CM-M FOR CAM PART NUMBERS.



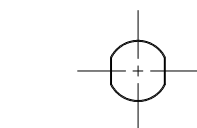
PART No. CM-9-1B109-21B-KA SHOWN
ASSEMBLED WITH CAM PART No. CM-M101
(CAM ORDERED SEPARATELY)

CAM ROTATION DIRECTION

NOTE: LOCK PLUG IS SHOWN IN THE UNLOCKED POSITION.
SOLID LINE CAM DEPICTS UNLOCKED CAM POSITION.
DOTTED LINE CAM DEPICTS LOCKED CAM POSITION.
LOCK PLUG IN LOCKED POSITION IS NOT SHOWN.



12-9 O'CLOCK (CCW)



PANEL PREPARATION
ORIENTATION



MATERIAL AND FINISH

COMPONENT	MATERIAL DESCRIPTION	FINISH DESCRIPTION	REMARKS
LOCK PLUG & WING DRIVER	DIE CAST ZINC	CHROME PLATED	VISIBLE PORTION OF LOCK PLUG IN ASSEMBLY IS POWDER COATED
		TRIVALENT CHROMATE CONV. COATED & POWDER COATED	
HOUSING	DIE CAST ZINC	CHROME PLATED	HEAD IS POWDER COATED ABOVE SECTION A-A
		TRIVALENT CHROMATE CONV. COATED & POWDER COATED	
RETAINING-RING	STEEL	ZINC PLATE, BRIGHT CHROMATE CONV. COATING	
SCREW	STEEL	ZINC PLATE, BRIGHT CHROMATE CONV. COATING	
MOUNTING NUT	DIE CAST ZINC	TRIVALENT CHROMATE CONV. COATING	
KEYS, 2 FLAT	BRASS	NICKEL PLATE	2 KEYS ON A RING
STEEL BALL	CHROME STEEL	NATURAL	WING DRIVER VERSION ONLY!
SPRING	STAINLESS STEEL	PASSIVATED	WING DRIVER VERSION ONLY!

REV	DATE	DRAWN/CHKD	DESCRIPTION
B	08MAR2007	MJS/KPL	PRN: P2007-0350
C	24APR2008	CW/MJS	PRN: P2008-0453
D	22OCT2009	ACH/MJS	PRN: P2009-1222
E	14SEP2015	CMS/LT	PRN: P2015-1864

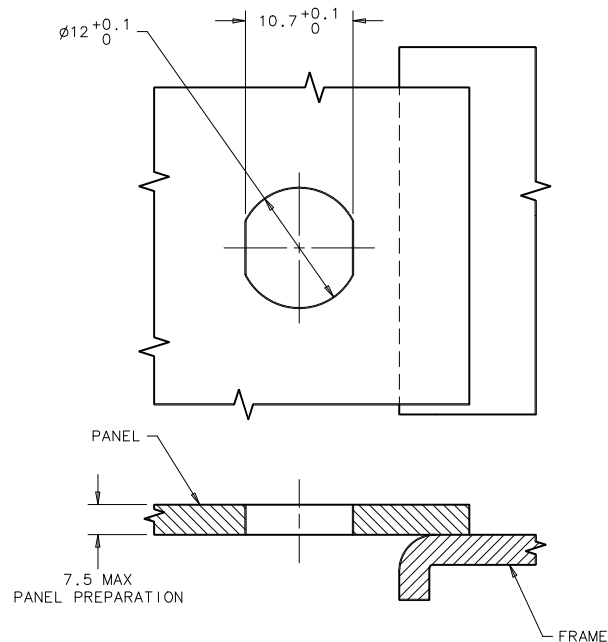
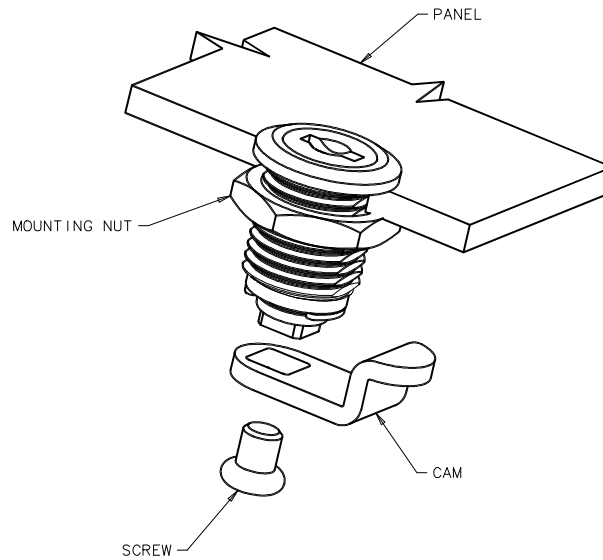
MILLIMETERS

ALL DIMENSIONS WITHOUT
TOLERANCES ARE FOR
REFERENCE ONLY.

 THIRD ANGLE PROJECTION	 A3 PAPER SIZE
SHEET 2 OF 2	

INSTALLATION:

1. INSTALL MOUNTING NUT AND TIGHTEN TO 3 N·m (26 lbf-in).
2. INSTALL CAM TO LATCH ASSEMBLY, REFER TO SHEET 1 FOR CAM ROTATION ILLUSTRATIONS FOR PROPER ORIENTATION.
3. INSTALL SCREW, TIGHTEN TO 2 N·m (18 lbf-in) MAX WITH A No. 2 PHILLIPS DRIVER.



PANEL PREPARATION